

機械選択情報 Machinery Sale Information



CMC CO., LTD

<TEL・FAX> (81) 277-46-9165 / (81) 277-46-9166

<E-Mail> cmcmac@cmcmachinery.co.jp

Date:2021.Oct.22



Listing No.61117

<1630566>

New Machine

TAKAMAZ	CNC 1 Spindle 1 Turret Precision Lathe Machine	GSL-10H FANUC-Oi-MateTD	2021 / Oct
---------	--	-------------------------	------------

■ MAIN SPECIFICATIONS ■

❖ CNC 1 スピンドル 1 タレット精密旋盤	❖ CNC 1 Spindle 1 Turret Lathe Machine
❖ チャックサイズ:6インチ	❖ Chuck Size : (Inch) 6
❖ 最大加工径: (mm) φ 180	❖ Max.Turning Center :(mm) Φ180
❖ 最大加工長: (mm) 190	❖ Max.Turning Lenght :(mm) 190
❖ 最大棒材径: (mm) φ 26	❖ Max. Bar Diameter :(mm) φ26
❖ 刃物台形状: (角) 8	❖ Tool Post Type: 8 Station Turret
❖ 主軸回転数:(rpm) 4,500	❖ Spindle Speed (rpm) 4,500
❖ 主軸軸受内径:(mm) φ 75	❖ Spindle Shaft Inner Diameter (mm) Φ75
❖ ボーリングホルダ内径:(mm) φ 25	❖ Boring Holder Inner Diameter (mm) Φ25
❖ 機械重量:1,620kg	❖ Machine Weight: 1,620kg

<< Contact Us >>



殿

部品チェックリスト

機種	GSL-10H	製番	CR00031803
		機番	1630566

2021年10月20日

	名称	数量	チェック	部品の所在		名称	数量	チェック	部品の所在	
				(ダンボール)	(機械取付)				(ダンボール)	(機械取付)
付属品	工具箱			ダンボール		A 正				
	敷板	4	✓	ダンボール	機械同送	B 逆				
	治具(レベル出し用)			ダンボール		F ボーリング				
	プッシュロッド			ダンボール	機械取付	G 正(横)				
	電気予備品	1	✓	工具箱	ダンボール	H 逆(横)				
	操作キー			ダンボール		ベース				
	照明灯装置	1	✓	ダンボール	機械取付	ブロック(A・B・C)				
	チップコンベア			機械同送	機械取付	システムホルダ				
チップバケット			機械同送		外径ホルダ					
書類	制御装置保証書	1	✓			内径ホルダ				
	パラメータ・信号表	1	✓			突切りホルダ				
	検収書・検査表	0.1	✓			ボーリングホルダ	2	✓	2	
	取扱説明書	1	✓			2穴ホルダ				
	電気図面					Uドリルホルダ				
	その他図面					ターニングホルダ				
	制御装置取扱説明書					クランプブロック	8	✓	8	
	" 保守説明書					クーラントブロック	8	✓	8	
	" 取扱・保守説明書CD	1	✓			逃げ面吐出クーラントブロック				
	コンパクトフラッシュ					正面ミーリング				
パワーチャック	ジョイント					側面ミーリング				
	フランジ					ドリルホルダ				
	成形爪(生)					ドリルコレット				
	成形爪(焼)					スパナ				
	生爪									
	日鋼:									
	北川:									
豊和:										
帝国:										
コレットチャック	2Aフランジ・ジョイント					φ8(φ5/16)				
	2A850フランジ					φ10(φ3/8)				
	2A850ジョイント					φ12(φ1/2)				
	A6-(850・2A)フランジ・ジョイント					φ16(φ5/8)				
	普通型・補助型					φ20(φ3/4)				
	ツバ付型・静止型・飛越型					φ25(φ1)				
						φ32(φ1 1/2)				
その他	バーストツパー									
	スペアボルト									
	ジャッキボルト									
テーパーピン										
トランス (KVA)										
運送会社名	浅野川・北進・野々市・上組・日本トランス その他 (引取り) 据付・車上渡し									
ダンボール総数 (/) 個										

責任者	担当者	点検者
		中島

CNC Spindle Turret
Precision Lathe

CSL series

 **C.M.C CO.,Ltd**

〒379-2301 1523-4 Yabuzuka Cho Ota Shi Gunma Ken
TEL:0277-46-9165 FAX:0277-46-9166
E-mail:cmcmac@cmcmachinery.co.jp
URL:<http://www.cmcmachinery.co.jp>

TAKAMAZ

CNC Spindle Turret Precision Lathe

GSL series



GSL-10H

Chuck size

6

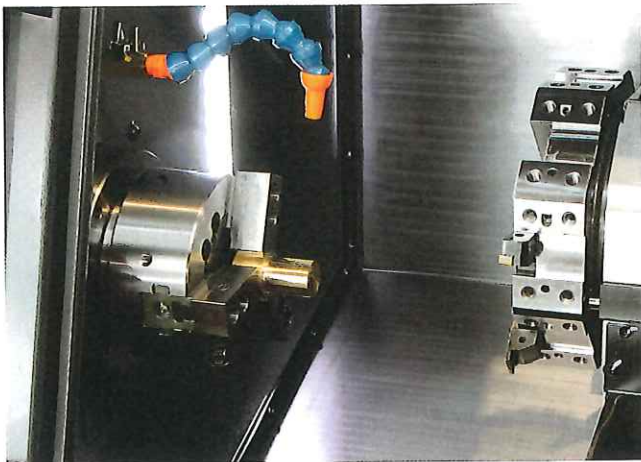
Inch

Max.turning diameter	φ 180mm
Max.turning length	190mm
Max.bar diameter	φ 26mm (Hollow)
Tool post type	8-station turret
Rapid traverse rate	X:12 Z:18 m/min
Spindle motor	AC 5.5/3.7 kW
Dimensions(LxW)	1,610 × 1,390 mm
Controller	TAKAMAZ & FANUC

GSL-10H

Stroke Adjustable Chucking Cylinder Provided as Standard

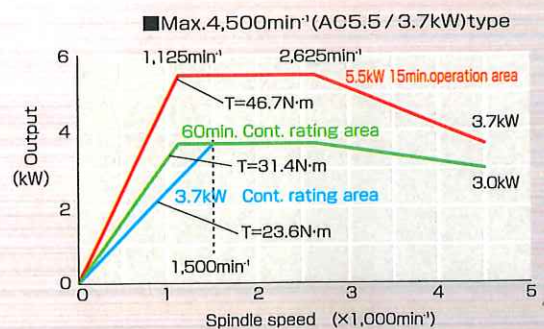
Maximum turning diameter with a 6-inch chuck is $\phi 180\text{mm}$. With the machine's compactness in design taking up only 1,610mm x 1,250mm of floor space, installation is not a problem. Also components for routine maintenance are accessible on the front and back of the machine making side-by-side machine placement possible.



Turning Capabilities Equivalent to our Flagship Models

<p>OD Heavy Load Cutting</p> <p>0.2mm/rev 3mm</p> <p>■ Cross-sectional cutting area (t*f) 0.6mm²/rev</p>	<p>OD Grooving</p> <p>5mm 0.1mm/rev 40mm</p> <p>■ Groove width 5mm/40mm</p>	<p>Drill Cutting</p> <p>0.25mm/rev 23mm</p> <p>■ Feed 0.25mm/rev</p>
--	--	---

Spindle power characteristic curve

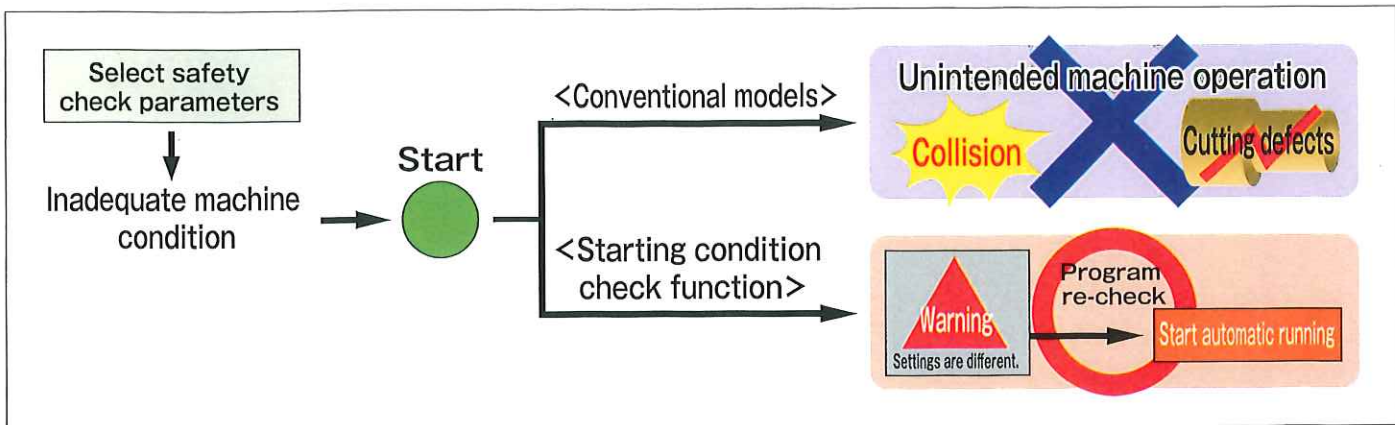


Work piece : S45C

Simple machine that focuses on cost performance as well as ease of use.

The Start Condition Confirmation Function Prevents Machine Trouble.

After pressing the cycle start button, the machine checks the machine's presets and checks if conditions are met. If the conditions are not met, the machine will prompt a warning on the display. The enhanced software and safety features can prevent operator start-up errors, any mechanical damage, and even the outflow of defective products.



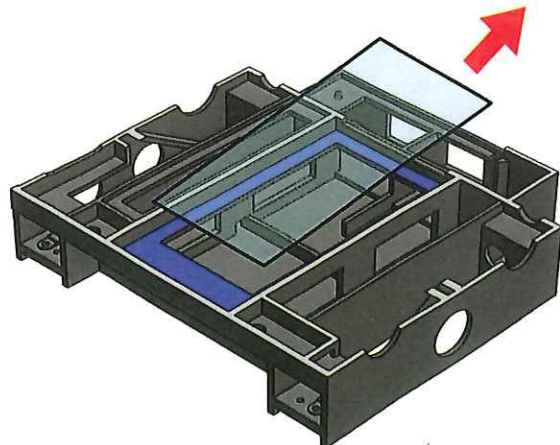
Improved Operability

Through ergonomic design, the machine operational panel has been installed at an optimal height. This makes the monitor easier to see from a comfortable posture. Buttons that are used in high frequency are easy to press and positioned on the right side. This improves workability as well as preventing malfunctions and mistakes. The variation in height of operators was considered in the design process of the door handles. The handle is made of stainless steel and elongated for easier opening and closing of the door.

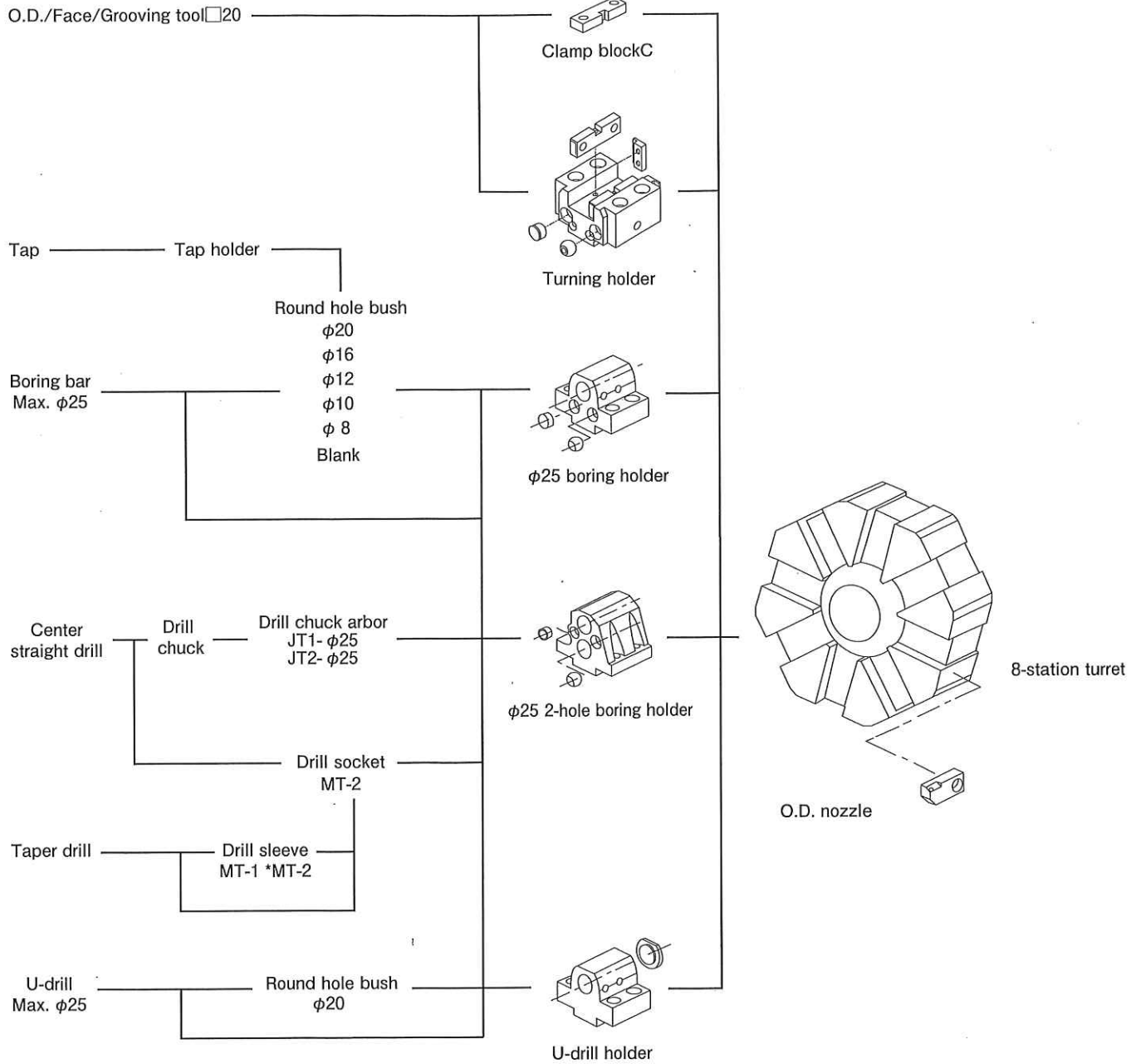


Designed with the Operator in Mind

With the spindle height at 960mm and 270mm from the front of the machine, anyone can easily replace the chuck or work. Also, the overall height of the machine is only 1,585mm. This creates some open space for the operator so they will not feel cramped and confined. The cutting oil tank has a cover made of removable sheet metal. Now it is possible to clean up small chips that often remained and keep the machine clean.

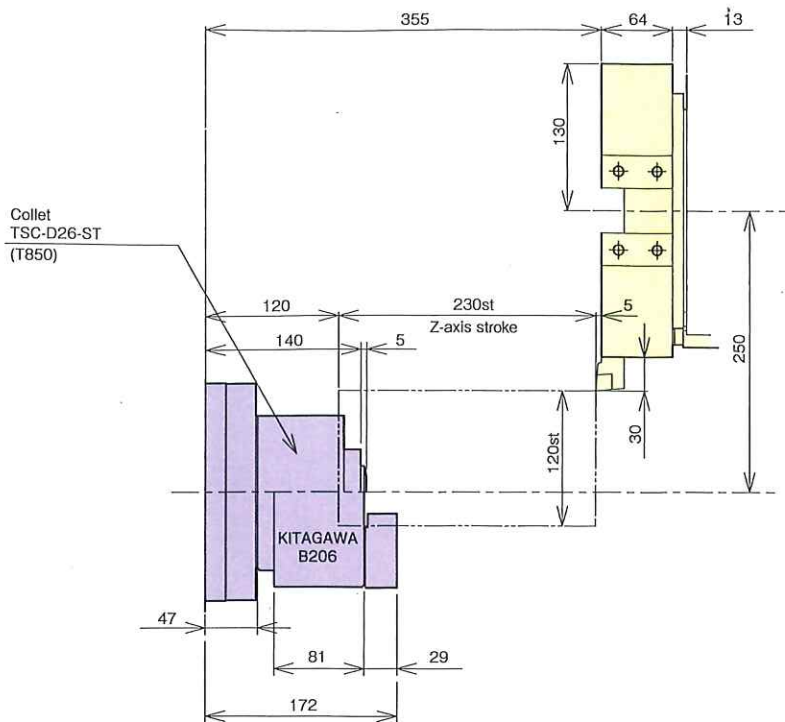


GSL-10H

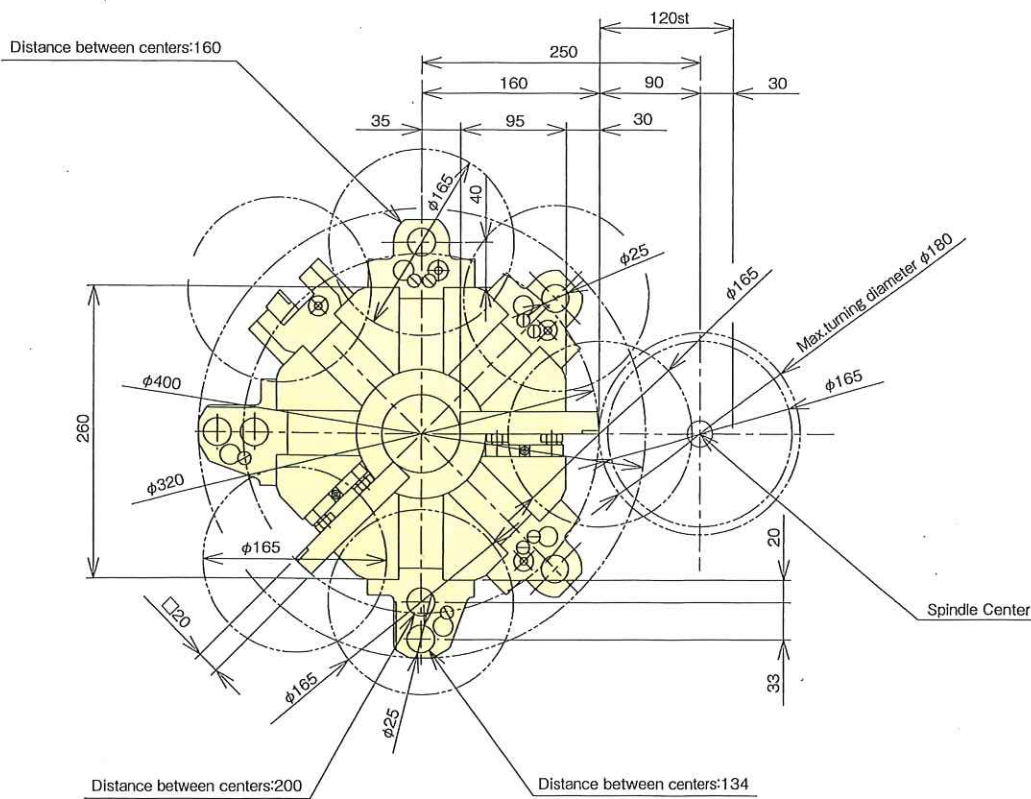


Stroke-Related Drawing

GSL-10H

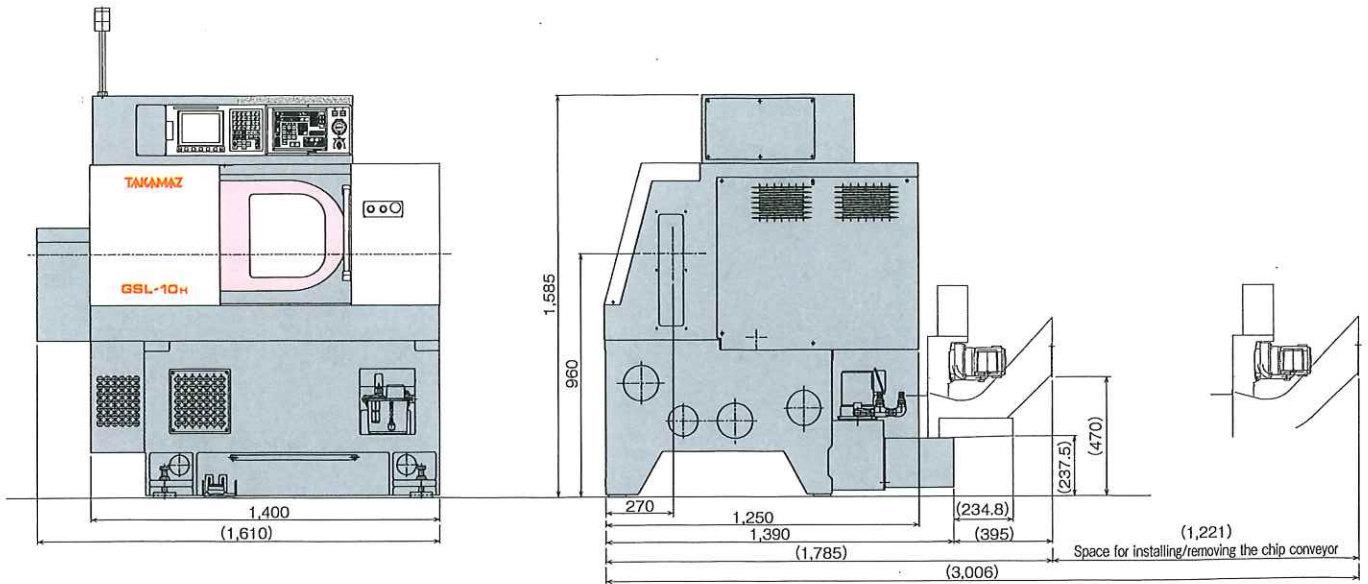
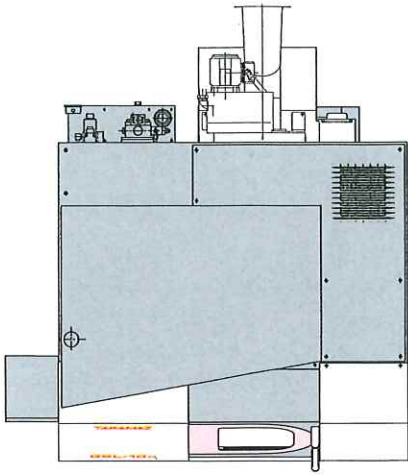


Turret Interference



Unit(mm)

GSL-10H



Unit(mm)

SPECIFICATION

Machine Specifications

Item		Unit	GSL-10H	GSL-15 PLUS	
				Without tailstock	With tailstock
Capacity	Max. turning diameter	mm	φ180	φ310	
	Max. turning length	mm	190	300	
	Max. bar diameter	mm	φ26(Hollow)	Solid	
	Chuck size	inch	Collet,6	8	
Spindle	Spindle nose	JIS	A ₂ -5	A ₂ -6	
	Spindle bearing I.D.	mm	φ75	φ100	
	Through-hole on spindle	mm	φ46	φ61	
	Spindle speed	min ⁻¹	Max.4,500	Max.3,500	
Tool post	Type		8-station turret	8-station turret	
	Tool shank	mm	□20	□25(I.D.)□20	
	Boring holder I.D.	mm	φ25	φ32	
	Max. stroke	mm	X:120 Z:230	X:175 Z:330	X:160 Z:330
	Rapid traverse rate	m/min	X:12 Z:18	X:18 Z:24	
Motors	Spindle motor	kW	AC5.5/3.7	AC7.5/5.5	
	Feed motor	kW	X:AC0.75 Z:AC1.2	X:AC1.2 Z:AC1.8	
	Coolant motor	kW	AC0.25	AC0.4	
	Hydraulic motor	kW	AC0.75	AC0.75	
Tailstock	Pointed End		-	-	MT-4
	Quill O.D.	mm	-	-	φ56
	Quill stroke	mm	-	-	85
	Tailstock stroke	mm	-	-	220
	Max. thrust	kN	-	-	3.5
Size	L×W×H	mm	1,610 × 1,390 × 1,585	1,875(With tailstock:1,990) × 1,680 × 1,500	
	Machine weight	kg	1,620	2,300	2,500
Total electric capacity		KVA	12	14	

Standard Accessories

Item	GSL-10H	GSL-15 PLUS
<input type="checkbox"/> Boring holder		2 sets
<input type="checkbox"/> Clamp block		8 sets
<input type="checkbox"/> Coolant block(O.D.nozzle)		8 sets (For reverse cutting tools)
<input type="checkbox"/> Hydraulic chucks	- (Parts order)	1 set (Solid)
<input type="checkbox"/> Hydraulic chucking cylinder	1 set (Hollow)	1 set (Solid)
<input type="checkbox"/> Hydraulic unit		1 set
<input type="checkbox"/> Thread cutting unit(Including constant surface speed control)		1 set
<input type="checkbox"/> Coolant unit	1 set (125 lit.)	1 set (110 lit.)
<input type="checkbox"/> Work light		1 set
<input type="checkbox"/> Signal light		1-color
<input type="checkbox"/> TAKAMAZ instruction manual		1 set

Parts Order

Item	GSL-10H	GSL-15 PLUS
<input type="checkbox"/> Tool holders		○
<input type="checkbox"/> Collet chucks	○	-
<input type="checkbox"/> Hydraulic chucks	○	(Standard)
<input type="checkbox"/> Rear chip conveyor		○(Spiral type)
<input type="checkbox"/> Front air blower		○
<input type="checkbox"/> Automatic door system		○

※Delivery will be separate from machine order.This is handled as parts order.

Controller Specifications

Item	GSL-10H	GSL-15PLUS
	TAKAMAZ & FANUC Oi Mate-TD	TAKAMAZ & FANUC Oi-TF
Controlled axes	2 axes (X, Z)	
Simultaneously controllable axes	Simultaneous 2 axes	
Least input increment	0.001mm (X in diameter)	
Least command increment	X : 0.0005mm Z : 0.001mm	
Auxiliary function	M-code 3 digit	
Spindle function	S-code 4 digit	
Tool function	T-code 4 digit	
Tape code	EIA (RS232C) /ISO (840) automatic recognition	
Cutting feedrate	1~5,000mm/min	1~7,000mm/min
Command system	Incremental/Absolute	
Linear interpolation	G01	
Circular interpolation	G02, G03	
Cutting feedrate override	0~150%	
Rapid traverse override	F0, 100%	
Program file name	-	32 characters
Program number	4 digits	-
Backlash compensation	0~9,999 μ m	
Program memory capacity	512Kbyte(1,280m)	
Tool offsets	64 sets	
Registered programs	400 pcs.	
Tool geometry/Wear offset	Standard	
Canned cycle	G90, G92, G94	
Radius designation on arc	Standard	
Tool offset measurement input	Standard	
Background editing	Standard	
Direct drawing dimension programming	Standard	
Custom macro	Standard	
Custom macro common variables	#100~#199, #500~#999	
Pattern data input	Standard	
Nose R compensation	G40, G41, G42	
Inch/Metric conversion	G20/G21	
Programmable data input	G10	
Run hour/Parts count display	Standard	
Extended part program editing	Standard	
Multiple repetitive cycle	G70~G76	
Multiple repetitive cycle II	-	Pocket-shaped
Canned drilling cycle	Standard	
Constant surface speed control	G96, G97	
Continuous thread cutting	G32	
Variable lead thread cutting	G34	
Thread cutting retract	Standard	
Clock function	Standard	
Help function	Standard	
Alarm history display	50 pcs.	
Self-diagnosis function	Standard	
Sub-program call	Up to 10 loops	
Decimal point input	Standard	
2nd reference point return	G30	
Work coordinate system setting	G50, G54~G59	
Stored stroke check 1	Standard	
Stored stroke check 2,3	Standard	
Input/Output interface	USB Flash Memory, Memory card, Ethernet	
Alarm message	Standard	
Graphic display	Standard	
Conversational programming with graphic function	Standard	
Abnormal load detection	Standard	
Starting condition check function	Standard	
Automatic data backup	-	Standard
TAKAMAZ maintenance functions	Standard	
FANUC set of manuals	CD-ROM	DVD-ROM

Optional Specifications (Parts Order)

Item	GSL-15PLUS
Tool life management	
Multiple M codes in one block	Max.2
Spindle orientation	1 set/2~6 sets
TAKAMAZ Support Lite	Workpiece counter, Tool counter, Constant wear compensation